



## MOTION MEASUREMENT MADE EASY AND ACCURATE

EasyAngle is an innovative range of motion measurement device that enables the clinician to quickly and accurately measure the mobility of all joints in the body, providing enhanced patient feedback.

## EASYANGLE ADVANTAGES

### Easy to use

Measurement with one hand allows for the clinician to support the patient and enables an easy assessment procedure. Only one alignment is needed at a time and the display clearly shows each measured result, along with the four previous measurements.

### Patient motivation

With EasyAngle it is simple to objectively measure status and progress in small steps due to the device's high accuracy. Measured joint angles can easily be communicated and used to motivate patients to follow established rehabilitation programmes.

### Accuracy

EasyAngle has a high precision sensor that is accurate to within  $\pm 1$  degree.

### All-in-one

EasyAngle can be used for high quality assessment of all relevant joints in the body; replacing the goniometer, inclinometer, CROM-device, BROM-device and scoliometer.

## PRODUCT SPECIFICATIONS

### Delivered in a practical box containing:

- EasyAngle sensor unit
- Alignment guide
- USB charging cable
- Instructions for use

**Charge time:** 2 hours

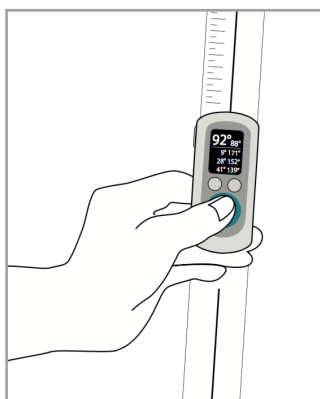
**Usage time:** 2 weeks (at 12 minutes usage per day)

**Standby time:** 11 weeks

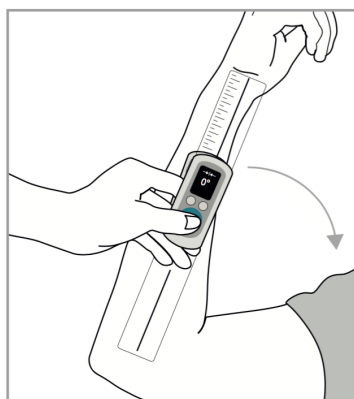




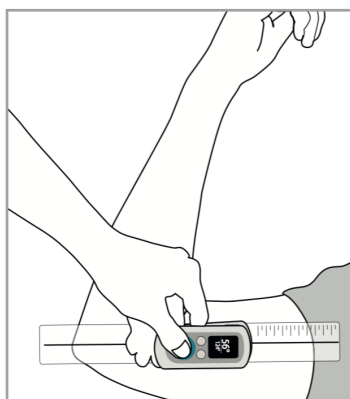
## HOW TO MEASURE WITH THE EASYANGLE



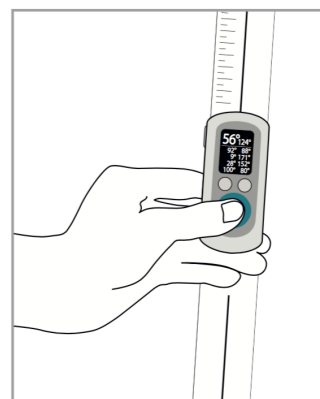
**Step 1:**  
Press the button to enter the EasyAngle measurement mode



**Step 2:**  
Align the device with the first limb and press the button to start the measurement



**Step 3:**  
Align the device with the second limb and press the button to end the measurement



**Step 4:**  
Press again to view the measured angle along with the last four recordings

## ADDITIONAL INFORMATION

### EasyAngle tutorials:

[Click here](#) to view our online portfolio of EasyAngle assessment protocol videos.

### EasyAngle research:

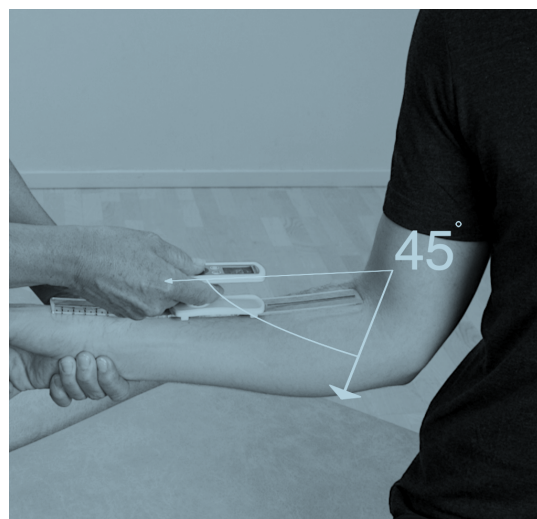
[Click here](#) to view a range of EasyAngle research papers.

### EasyAngle training:

[Click here](#) to book a slot on one of our weekly EasyAngle training sessions with a Technical Specialist.

**Cost:** £250 (+VAT) with free delivery.

**Delivery time:** Dispatched next working day.



## GAIT AND MOTION TECHNOLOGY LTD

Tel: 01223 603984

Email: [info@gaitandmotion.co.uk](mailto:info@gaitandmotion.co.uk)

Web: [www.gaitandmotion.co.uk/easyangle](http://www.gaitandmotion.co.uk/easyangle)

